

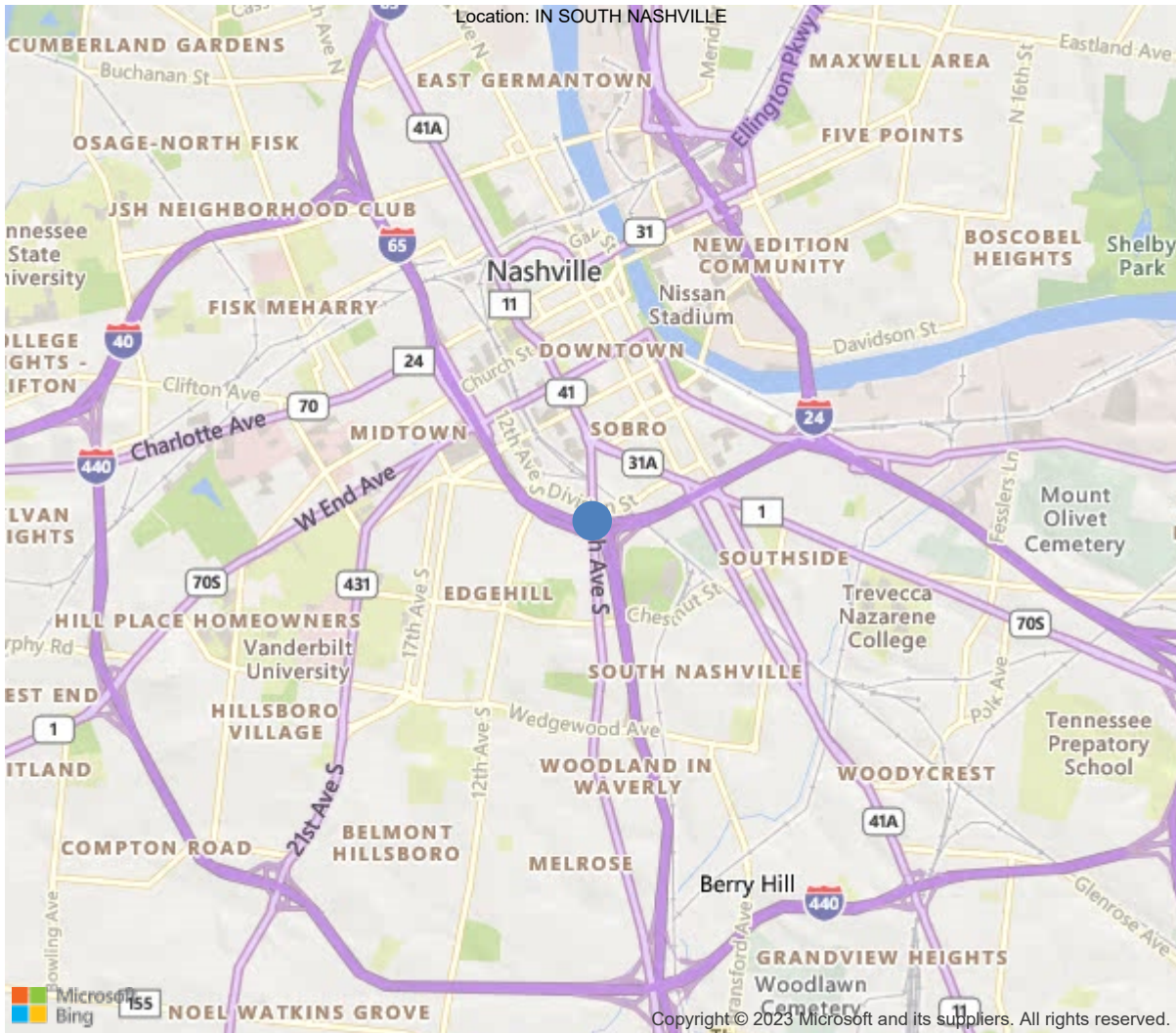


Latitude:36.14890, Longitude:-86.77924

Region 03, 19 - Davidson County

Team Leader: Jimmy Haynes

Inspectors: Ricky Knight, Harley Anderson



I40 LL / 8TH AVE (SR 6)

36.14890, -86.77924

90 - LAST INSPECTION DATE 12/07/2021

10 - MIN. V.C. OVER DECK
(ROADWAY + SHOULDERS) 99.99 FT.

520 - MIN. V.C. OVER DECK
(EXCLUDES SHOULDERS) 99.99 FT.

36 - TRAFFIC SAFETY FEATURES

| Br. Rail | Trans. | Appr. Rail | Terminal | SPEED LIM. |
|----------|--------|------------|----------|------------|
| 0 | 0 | 0 | N | 55 |

41 - STRC OPEN/CLOSED/POSTED A

58 - DECK 5

59 - SUPERSTRUCTURE 5

60 - SUBSTRUCTURE 5

61 - CHANL/CHANL PROTECTION N

62 - CULVERT AND RETAIN WALL N

71 - WATERWAY ADEQUACY N

72 - APPROACH RDWY ALIGNMENT 8

521 - OVERALL CONDITION 2 - Fair

| 16 - LATITUDE | 17 - LONGITUDE |
|---------------|----------------|
| 36.148903 | -86.779242 |

N NOT APPLICABLE

9 EXCELLENT CONDITION

8 VERY GOOD CONDITION - NO
PROBLEMS NOTED.

7 GOOD CONDITION - SOME MINOR PROBLEMS.

6 SATISFACTORY CONDITION - MINOR
DETERIORATION OF STRUCTURAL
ELEMENTS.

5 FAIR CONDITION - ALL PRIMARY
STRUCTURAL ELEMENTS ARE SOUND BUT
MAY HAVE MINOR SECTION LOSS,
CRACKING, SPALLING OR SCOUR.

4 POOR CONDITION - ADVANCED SECTION
LOSS, DETERIORATION, SPALLING OR
SCOUR.

3 SERIOUS CONDITION - LOSS OF SECTION,
DETERIORATION, SPALLING OR SCOUR HAVE
SERIOUSLY AFFECTED PRIMARY
STRUCTURAL COMPONENTS. LOCAL
FAILURES ARE POSSIBLE. FATIGUE CRACKS
IN STEEL OR SHEAR CRACKS IN CONCRETE
MAY BE PRESENT.

2 CRITICAL CONDITION - ADVANCED
DETERIORATION OF PRIMARY STRUCTURAL
ELEMENTS. FATIGUE CRACKS IN STEEL OR
SHEAR CRACKS IN CONCRETE MAY BE
PRESENT OR SCOUR MAY HAVE REMOVED
SUBSTRUCTURE SUPPORT. UNLESS
CLOSELY MONITORED IT MAY BE
NECESSARY TO CLOSE THE BRIDGE UNTIL
CORRECTIVE ACTION IS TAKEN.

1 "IMMINENT" FAILURE CONDITION - MAJOR
DETERIORATION OR SECTION LOSS
PRESENT IN CRITICAL STRUCTURAL
COMPONENTS OR OBVIOUS VERTICAL OR
HORIZONTAL MOVEMENT AFFECTING
STRUCTURAL STABILITY. BRIDGE IS
CLOSED TO TRAFFIC BUT CORRECTIVE
ACTION MAY PUT IT BACK IN LIGHT SERVICE.

0 FAILED CONDITION - OUT OF SERVICE AND
BEYOND CORREC

Jimmy D. Haynes
TEAM LEADER SIGNATURE

| IDENTIFICATION | |
|---|---|
| (1) State Names | 47 - Tennessee |
| (8) Structure Number | 19I00400080 |
| (5) Inventory Route | 1 |
| (2) Highway Agency District | Region 3 |
| (3) County Code | 19 - Davidson |
| (4) Place Code | 52006 |
| (6) Features Intersected | 8TH AVE (SR 6) |
| (7) Facility Carried | I40 |
| (9) Location | IN SOUTH NASHVILLE |
| (11) Mile Point | 18.340 mi |
| (12) Base Highway Network | Yes |
| (13) LRS Inventory Rte & Subrte | 19I0040001 |
| (16) Latitude | 36.148903 |
| (17) Longitude | -86.779242 |
| (98) Border Bridge State Code | |
| (99) Border Bridge Structure No. | |
| STRUCTURE TYPE AND MATERIAL | |
| (43) Main Structure Type | 42 |
| Material | 4 - Steel continuous |
| Type | 2 - Stringer/Multi-beam or girder |
| (44) Approach Structure Type | 00 |
| Material | 0 - Other / None |
| Type | 0 - Other / None |
| (45) No. of Spans in Main Unit | 3 |
| (46) No. of Approach Spans | 0 |
| (107) Deck Structure Type | 1 - Concrete Cast-in-Place |
| (108) Wearing Surface/Protective System | |
| Type of Wearing Surface | 6 - Bituminous |
| Type of Membrane | 0 - None |
| Type of Deck Protection | 0 - None |
| AGE AND SERVICE | |
| (27) Year Built | 1970 |
| (106) Year Reconstructed | 0 |
| (42) Type of Service | 11 |
| On | 1 - Highway |
| Under | 1 - Highway, with or without pedestrian |
| (28) Lane | |
| On | 2 |
| Under | 4 |
| (29) Average Daily Traffic | 133586 |
| (30) Year of ADT | 2021 |
| (109) Truck ADT | 7 % |
| (19) Bypass, Detour Length | 1 mi |
| GEOMETRIC DATA | |
| (48) Length of Maximum Span | 71.9 ft |
| (49) Structure Length | 132.9 ft |
| (50) Curb or Sidewalk Width | |
| Left | 0.0 ft |
| Right | 0.0 ft |
| (51) Bridge Roadway Width Curb to Curb | 39.7 ft |
| (52) Deck Width Out to Out | 41.7 ft |
| (32) Approach Roadway Width (W/Shoulders) | 38.1 ft |
| (33) Bridge Median | 1 - Open median |
| (34) Skew | 84 Deg |
| (35) Structure Flared | 0 - No flare |
| (10) Inventory Route Min Vert Clear | 99.99 ft |
| (47) Inventory Route Total Horiz Clear | 39.7 ft |
| (53) Min Vert Clear Over Bridge Rdwy | 99.99 ft |
| (54) Min Vert Underclear | 14.93 ft |
| Ref: | |
| (55) Min Lat Underclear RT | 9.8 ft |
| Ref: | |
| (56) Min Lat Underclear LT | 99.9 ft |
| NAVIGATION DATA | |
| (38) Navigation Control | N - Not applicable, no waterwa |
| (111) Pier Protection | |
| (39) Navigation Vertical Clearance | 0.0 ft |
| (116) Vert-Lift Bridge Nav Min Vert Clear | ft |
| (40) Navigation Horizontal Clearance | 0.0 ft |

| CLASSIFICATION | |
|--|-------------------------------------|
| (112) NBIS Bridge Length | Y |
| (104) Highway System | 1 |
| (26) Functional Class | 11 - Urban Principal Arterial |
| (100) Defense Highway | 1 - The inventory route is on |
| (101) Parallel Structure | L - The left structure of para |
| (102) Direction of Traffic | 1 - way traffic |
| (103) Temporary Structure | |
| (105) Federal Lands Highways | 0 - N/A |
| (110) Designated National Network | 1 - The inventory route is par |
| (20) Toll | 3 - On free road. The structu |
| (21) Maintain | 1 - State Highway Agency |
| (22) Owner | 1 - State Highway Agency |
| (37) Historical Significance | 4 - Historical significance is |
| CONDITION | |
| (58) Deck | 5 |
| (59) Superstructure | 5 |
| (60) Substructure | 5 |
| (61) Channel & Channel Protection | N |
| (62) Culverts | N |
| LOAD RATING AND POSTING | |
| (31) Design Load | 5 - MS 18 / HS 20 |
| (63) Operating Rating Method | 1 |
| (64) Operating Rating | |
| Type | 1 - Load Factor(LF) |
| Rating | 65.70 |
| (65) Inventory Rating Method | 1 - Load Factor(LF) |
| (66) Inventory Rating | |
| Type | |
| Rating | 32.40 |
| (70) Bridge Posting | 5 - Equal to or above legal loads |
| (41) Structure Open/Posted/Closed | A - Open, no restriction |
| APPRAISAL | |
| (67) Structural Evaluation | 5 |
| (68) Deck Geometry | 6 |
| (69) Clearances, Vertical/Horizontal | 5 |
| (71) Waterway Adequacy | N |
| (72) Approach Roadway Alignment | 8 |
| (36A) Bridge Railings | 0 - Inspected feature does not meet |
| (36B) Transitions | 0 - Inspected feature does not meet |
| (36C) Approach Guardrail | 0 - Inspected feature does not meet |
| (36D) Approach Guardrail Ends | N - Not applicable or a safety feat |
| (113) Scour Critical Bridges | N - Bridge not over waterway. |
| PROPOSED IMPROVEMENTS | |
| (75) Type of Work | 35 - Bridge rehabilitation bec |
| (76) Length of Structure Improvement | 132.9 ft |
| (94) Bridge Improvement Cost | \$ 932 |
| (95) Roadway Improvement Cost | \$ 94 |
| (96) Total Project Cost | \$ 1399 |
| (97) Year of Improvement Cost Estimate | 2022 |
| (114) Future ADT | 177558 |
| (115) Year of Future ADT | 2042 |

| INSPECTIONS * | | | |
|--|------------|-------------|------|
| (90) Inspection Date | 12/05/2023 | | |
| (91) Frequency | 24 | | |
| (92) Critical Feature Inspection | Done | Freq. (Mon) | Date |
| A: Fracture Critical Detail | No | | |
| B: Underwater Inspection | No | | |
| C: Other Special Inspection | No | | |
| * The inspection date and frequency information in this box contains the current NBI date and frequency information. Please refer to the report header for the date this inspection was conducted. | | | |

PERFORMANCE EVALUATION

Time of Day Inspected 9:20 AM

Weather Conditions P Sunny 44

Vehicles Observed ALL TYPES

LIVE LOAD BEHAVIOR

Sub Horiz./ Vert. Defl (No)

Sub Vibration (No)

Super Horiz./ Vert. Defl (Yes) HVY VERTICAL DEFLECTION @ ABUT #2 BEARINGS UP TO 1/2" UNDER LOAD

Super Vibration (Yes)

APPROACH

Alignment (Good)

Pavement (Good) AC PATCH--'A' END

Embankment (Good)

TRAFFIC SAFETY FEATURES

Bridge Railing Rating (Poor) HVY SCALE ON TOE W/ EXP STEEL

Transitions Rating (Good)

Guardrail Rating (Good) LGT IMPACT DMG--'B' RT

SIGNS POSTED ON ROUTE

Paddleboards No

Vertical Clearance (<14'-6") No

Posted Height

Narrow Bridge Signs No

One Lane Bridge Signs No

Other Signs or Plaques

Weight Limit Posted Not Needed

Gross Tons

Single-unit Vehicle Tons

Multi-unit Vehicle Tons

564 Assigned Bridge Name

DECK

| Wearing Surface Type | | Asphalt | Wearing Surface Depth | 3 |
|------------------------------------|--------|--|-----------------------|---|
| Wearing Surface | (Good) | | | |
| Deck - Structural Condition | (Fair) | HAIRLINE MAP AND TRANSVERSE CRACKS W/EFF., SP#1 OVERHANG-POOR, SP. #2-SPALLS WITH EXPOSED STEEL AND DELAMINATION | | |
| Parapet | (Poor) | HVY SCALE ON TOE & RANDOM VERT. AND MAP CRACKS | | |
| Expansion Joints | (Poor) | HVY DEBRIS BUILD UP @ A END; PAVED OVER W/ IMPENDING POTHOLES @ 'B' END | | |

SUPERSTRUCTURE

| | | |
|-----------------------------|--------|---|
| Bearing Devices | (Poor) | HVY CORR & HVY DEBRIS BLD UP, LOOSE/MISSING NUTS 'A'-E' ABUT #2; ABUT 2 BRG C - CRITICAL - MISSING ANCHOR BOLT; ABUT #1 BRG 'E' -MISSING STABILIZER |
| Girders | (Fair) | RANDOM AREAS OF MOD CORR, LGH SECTION LOSS, BM 'E' POOR @ SPAN #3 - CRACK @ VERT STIFFNER; SP 2 BM 'A'--FAIR--MOD CORR AT PIER 2. BM 'E'--HVY RUST. SECT LOSS |
| Diaphragms | (Fair) | LGH CORR & PAINT FAILURES |
| Superstructure Paint | (Fair) | MOD-HVY PEELING |
| Alignment of Members | (Good) | |

ABUTMENTS

| | | |
|---------------------------------|---------------|--|
| Abutment Caps | (Fair) | ABUT #2 -FAIR- SCALE W/EXP. STL. |
| Abutment Wings | (Poor) | ABUTMENT # 1 LT SIDE- HVY SCALE & MAP CRACKS |
| Abutment Backwall | (Fair) | ABUTMENT #1 & #2 LT SIDE- MOD SPALLS W/EXP. STL.--#2--POOR |
| Abutment Plumb | (Good) | |
| Abutment Footing | (Not visible) | |
| Abutment Piles | (Not Visible) | |
| Abutment Embankment | (Good) | ABUT. #1-VOID |
| Abutment Bearing Surface | (Fair) | ABUT #1-MAP CRACKING UP TO 1/4" OPEN |
| Abutment Slope Paving | (Fair) | LIGHT SETTLEMENT & CRACKS ABUT #1 |

BENTS

| | | |
|-------------------------------|---------------|---------------------------|
| Bent Caps | (Good) | H.L. CRACKS @ BENT #2 |
| Bent Columns | (Good) | |
| Bent Plumb | (Good) | |
| Bent Footing | (Not Visible) | |
| Bent Piles | (Not Visible) | |
| Bent Bearing Surface | (Good) | BENT 2 RISER 'A'--VERT HC |
| Piles Need Replacement | (No) | |

Inspection Team's Summary

3 span Bridge / W.P.G.
I-40 WB / 8th AVE (SR 6)

Approach alignment ,pavement, and embankments are good. Bridge parapet rail is poor and substandard with heavy scale/spalls along base parapet. Approach rails are good but substandard.

The asphalt wearing surface is good. Deck structural condition is fair with hairline map cracks, and transverse cracks with efflorescence. Expansion joint at "A" end is poor with heavy debris build-up. "B" end expansion joint is paved over with potholes and impending potholes. Joint leakage shows moderate stains on abutments.

Girders are fair with random areas of moderate corrosion, areas of light section loss, and paint failures. Girder 'E' span #2 is poor due to a crack in the vertical stiffener at diaphragm connection. Bearings are poor at abutments with heavy corrosion, debris build up, and random loose/missing anchorage. Bearing 'C' at abutment 2 is critical with missing anchor bolt and loose/broken pin

Bent caps and columns are good. Abutment cap 2 is fair with map cracking and scale with exposed steel. Left wing of abutment #1 is poor due to heavy scale and map cracks. Backwalls at abutments are poor with heavy scale with exposed steel and spalls. Slope pavement is fair with light settlement and cracks at abutment #1.

Underpass safety features are non-existent.

General Inspection Comment

| ELEMENTS | DESCRIPTION | UNITS | TOTAL | CS1 | CS2 | CS3 | CS4 |
|---|---|-------|-------|------|------|------|-----|
| 12 | Re Concrete Deck | SF | 5533 | 3869 | 1660 | 4 | 0 |
| 1080 | Delamination/Spall/Patched Area | SF | 4 | 0 | 0 | 4 | 0 |
| 1130 | Cracking (RC and Other) | SF | 1660 | 0 | 1660 | 0 | 0 |
| 510 | Wearing Surfaces | SF | 5270 | 5270 | 0 | 0 | 0 |
| (12) Element record added 2015-11-18. | | | | | | | |
| (1080-12) Element record added 12/4/2019 | | | | | | | |
| (1130-12) Element record added 12/4/2019 | | | | | | | |
| (510-12) Element record added 2015-11-18. | | | | | | | |
| 107 | Steel Opn Girder/Beam | LF | 663 | 383 | 200 | 80 | 0 |
| 1000 | Corrosion | LF | 280 | 0 | 200 | 80 | 0 |
| 515 | Steel Protective Coating | SF | 5656 | 20 | 1127 | 4227 | 282 |
| 3410 | Chalking (Steel Protective Coatings) | LF | 5354 | 0 | 1127 | 4227 | 0 |
| 3420 | Peeling/Bubbling/Cracking (Steel Protective Coatings) | LF | 282 | 0 | 0 | 0 | 282 |
| (107) Element record added 2015-11-18. | | | | | | | |
| (1000-107) Element record added 12/4/2019 | | | | | | | |
| (515-107) Element record added 2015-11-18. | | | | | | | |
| (3410-515-107) Element record added 12/4/2019 | | | | | | | |
| (3420-515-107) Element record added 12/4/2019 | | | | | | | |
| 205 | Re Conc Column | EA | 6 | 6 | 0 | 0 | 0 |
| (205) Element record added 2015-11-18. | | | | | | | |
| 215 | Re Conc Abutment | LF | 85 | 46 | 35 | 4 | 0 |
| 1080 | Delamination/Spall/Patched Area | LF | 4 | 0 | 0 | 4 | 0 |
| 1130 | Cracking (RC and Other) | LF | 35 | 0 | 35 | 0 | 0 |
| (215) Element record added 2015-11-18. | | | | | | | |
| (1080-215) Element record added 12/4/2019 | | | | | | | |
| (1130-215) Element record added 12/4/2019 | | | | | | | |
| 234 | Re Conc Pier Cap | LF | 75 | 70 | 5 | 0 | 0 |
| 1130 | Cracking (RC and Other) | LF | 5 | 0 | 5 | 0 | 0 |
| (234) Element record added 2015-11-18. | | | | | | | |
| (1130-234) Element record added 12/4/2019 | | | | | | | |
| 300 | Strip Seal Exp Joint | LF | 43 | 0 | 0 | 0 | 43 |
| 2350 | Debris Impaction | LF | 43 | 0 | 0 | 0 | 43 |

| ELEMENTS | DESCRIPTION | UNITS | TOTAL | CS1 | CS2 | CS3 | CS4 |
|---|--------------------------------------|-------|-------|-----|-----|-----|-----|
| (300) Element record added 2015-11-18. | | | | | | | |
| (2350-300) Element record added 12/4/2019 | | | | | | | |
| 311 | Moveable Bearing | EA | 15 | 5 | 0 | 0 | 10 |
| 1000 | Corrosion | EA | 10 | 0 | 0 | 0 | 10 |
| 515 | Steel Protective Coating | SF | 30 | 0 | 0 | 0 | 30 |
| 3410 | Chalking (Steel Protective Coatings) | EA | 30 | 0 | 0 | 0 | 30 |
| (311) Element record added 2015-11-18. | | | | | | | |
| (1000-311) Element record added 12/4/2019 | | | | | | | |
| (515-311) Element record added 2015-11-18. | | | | | | | |
| (3410-515-311) Element record added 12/4/2019 | | | | | | | |
| 313 | Fixed Bearing | EA | 5 | 5 | 0 | 0 | 0 |
| 515 | Steel Protective Coating | SF | 10 | 10 | 0 | 0 | 0 |
| (313) Element record added 2015-11-18. | | | | | | | |
| (515-313) Element record added 2015-11-18. | | | | | | | |
| 331 | Re Conc Bridge Railing | LF | 266 | 0 | 133 | 0 | 133 |
| 1080 | Delamination/Spall/Patched Area | LF | 133 | 0 | 0 | 0 | 133 |
| 1130 | Cracking (RC and Other) | LF | 133 | 0 | 133 | 0 | 0 |
| (331) Element record added 2015-11-18. | | | | | | | |
| (1080-331) Element record added 12/4/2019 | | | | | | | |
| (1130-331) Element record added 12/4/2019 | | | | | | | |

Equipment List

General Inspection

☐ Pocket knife

☐ Sounding/chipping hammer

☐ Chain drag

☐ Range pole

☐ 25' rod - depth and clearance

Visual Aid

☐ Yes Binoculars

☐ Yes Flashlight

☐ Magnifying glass

☐ Hand mirror

Cleaning

☐ Wisk broom

☐ Wire brush

☐ Flat bladed screwdriver

☐ Hand shovel

☐ Penetrating oil (WD-40, etc.)

Tools For Access

☐ Ladders

☐ Rope

☐ Waders

☐ Machete or bush axe

Comment

Tools For Measuring

☐ Masonry/Wood Ruler

☐ Yes 6' Pocket Tape

☐ Yes 25' and 100' Tape

☐ Calipers

☐ Thermometer

☐ Carpenter's Level

☐ String and Weighted line (plumb bob)

Special Purpose Equipment

☐ Reach All

☐ Bucket Truck

☐ Traffic control

☐ Boat

☐ Sonar depth finder

☐ Increment borer

☐ Survey equipment

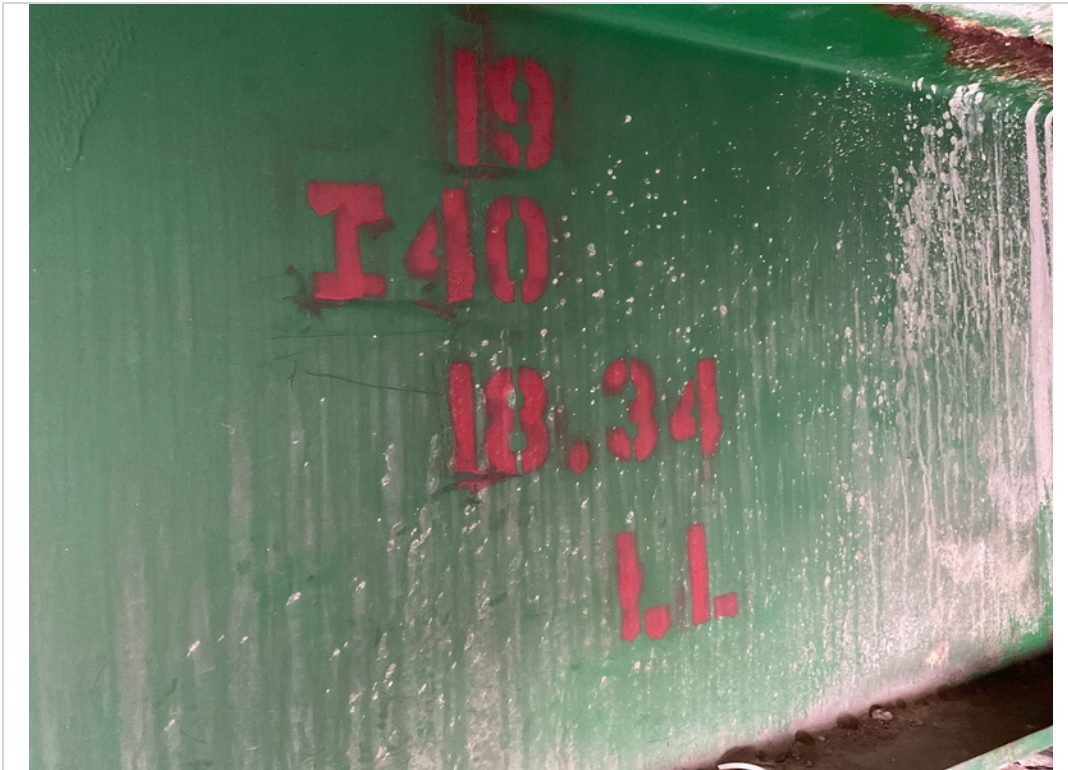
☐ Safety Harness

☐ Climbing equipment

☐ Dye penetrant

☐ Drone

Special Purpose Equipment



Bridge number



Clearance right side



Clearance left side



A approach



B approach



A approach pavement patches depression



Bridge rail span 1 spall



VAD



Span 3 bay D spalling at top flange of C



Span 3 bay D failing patch with eff



Span 3 bay C random map cracks with eff



Span 3 bay C failing patch with eff



Span 3 bay B failing patch with eff



Span 3 bay A failing patch will eff



Overhang span 3 left side scale with eff



Bottom deck span 3



Span 2 bay D random trans cracks with eff



Span 2 bay C failing patch with eff



Span 2 bay C random map cracks with eff



Overhang span 2 left side map cracks with eff



Overhang span 1 right side spall with exp steel



Span 1 bay D failing patch with spalling



Span 1 bay D failing patch with eff



Span 1 bay C random map cracks with eff



Span 1 bay B random map cracks with eff



Span 1 bay B failing patch with eff



Span 1 bay A random map cracks with eff



Overhang span 1 heavy scale with exp steel



Overhang span 1 left side heavy scale with eff



Bottom deck span 2



Bottom deck span 1



Overhang at Abut 1 left side and spall w/exp steel



Abut 1 left overhang and back wall spalls w/exp steel and hvy scale



Parapet left cracks



Span 1 and 2 parapet left heavy scale



Span 1 parapet right spall



Span 3 joint paved over with light potholes



Span 1 joint



Abut 2 bearing A loose anchorage all bearings rocked rack w/
Hvy debris



Abut 2 Bearing B corrosion loose anchorage



Abut 2 Bearing C missing bolt loose anchorage corrosion



Abut 2 bearing B loose anchorage. Missing nut corrosion



Abut 2 bearing A corrosion.



Abut 1 bearing A corrosion all bearing rocked back



Abut 1 bearing B corrosion vert h.c horiz crack w/eff



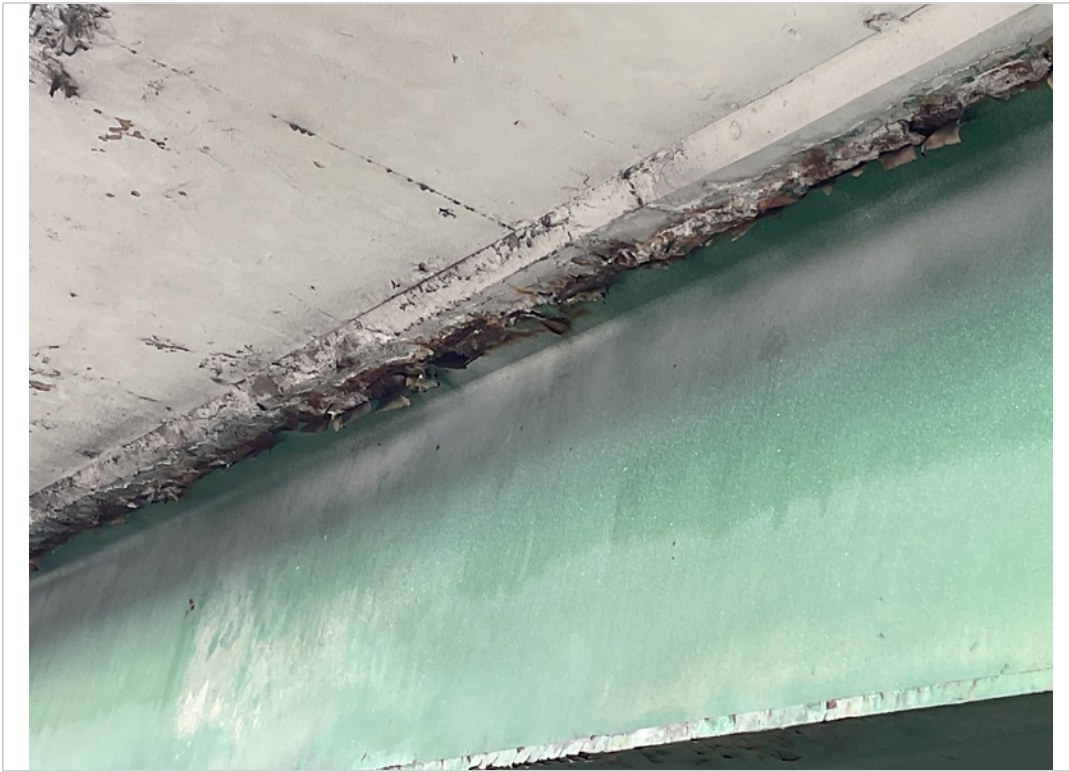
Abut 1 bearing C cracked riser and corrosion



Abut 1 bearing D corrosion and cracked riser. W/eff



Abut 1 bearing E missing stabilizer arm



Span 3 Girder E top flange corrosion with eff



Span 3 Girder E top flange corrosion



Span 3 Girder B top flange corrosion



Span 3 Girder A bottom flange corrosion



Span 2 Girder A top flange corrosion with eff



Span 2 Girder E top flange corrosion



Span 2 Girder E corrosion



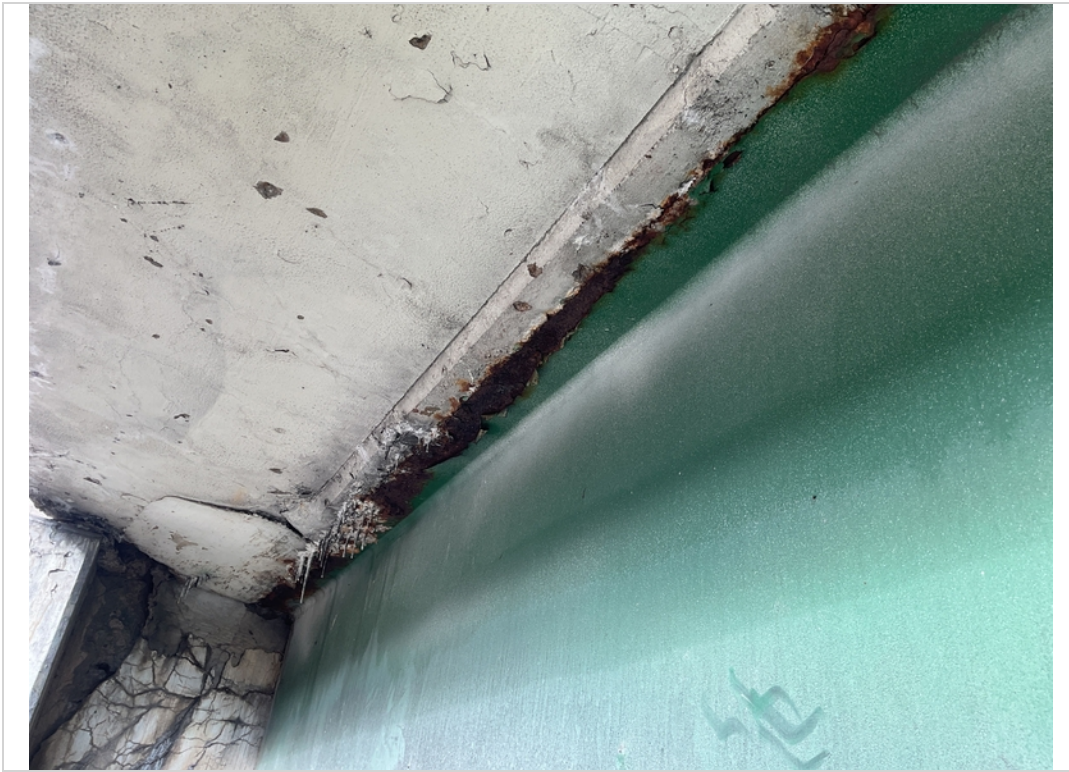
Span 2 Girder A top flange corrosion with eff



Span 2 Girder A impact scrapes



Span 2 Girder A top flange corrosion



Span 1 Girder E top flange corrosion with eff



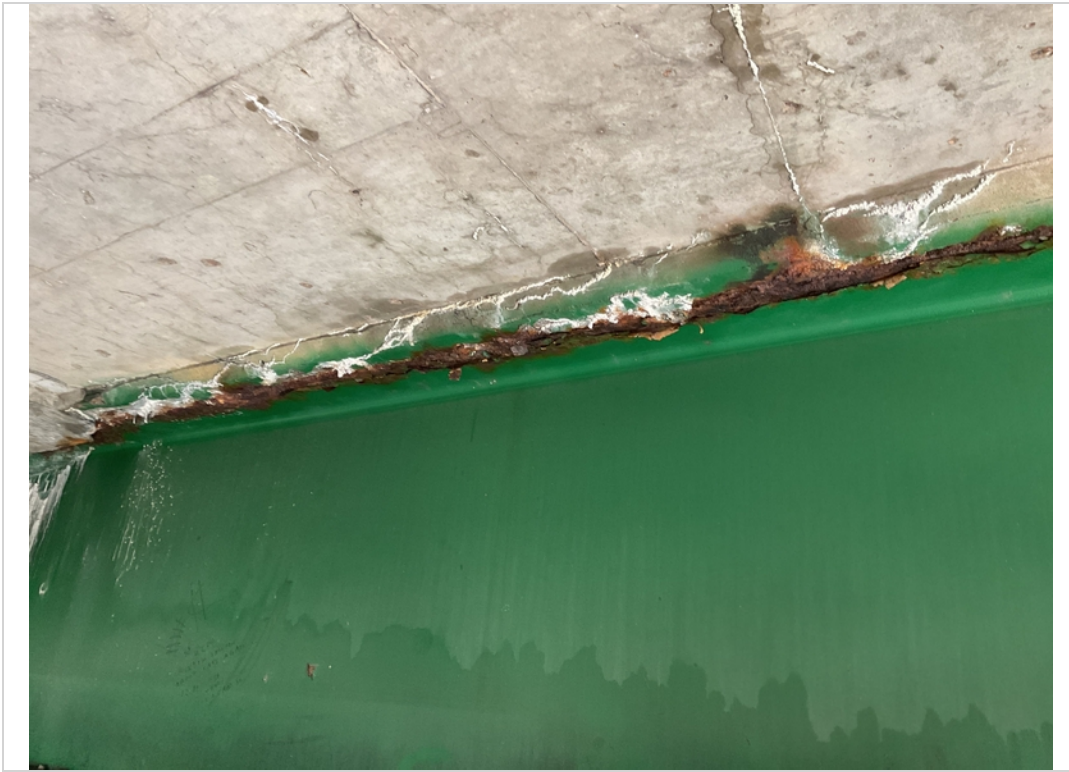
Span 1 Girder E top flange corrosion



Span 1 Girder C top flange corrosion



Span 1 Girder D top flange corrosion



Span 1 Girder A top flange corrosion



Span 1 Girder A bottom flange corrosion



Span 2 diaphragm #2 corrosion



Abut 2 hvy scale w/ exp steel



Abut 2 hvy scale.



Abut 2



Abut 1



Abut 1 left wing vert.h.c.



Abut 1 left @left wing hvy scale w/exp steel



Abut 1 left hvy scale W/exp steel



Abut 1 left hvy scale w/exp steel.



Abut 2 hvy scale w/exp steel.



Abut 1 hvy scale exp steel



Abut 1 map cracks



Abut 1 right spall



Abut 1 slope cracked w/erosion under slope.



Bent 2 vert h.c.



Bent 2.



Bent 1.

Maintenance Recommendations

525 - Repair List # N 523 - Repair List Add Date 524 - Repair List Revise Date 12/7/2021

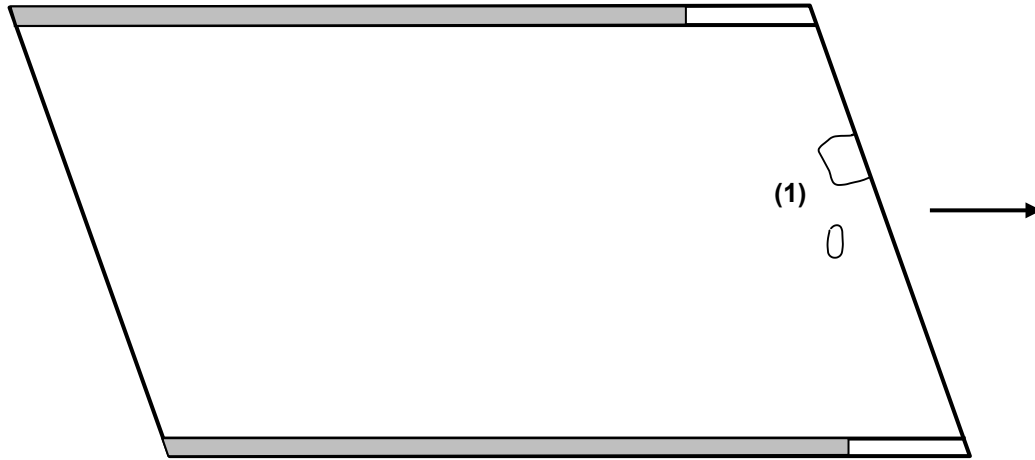
| Date Added | Recommendation | Priority |
|------------|--|----------|
| 01/05/2016 | CLEAN AND SPOT PAINT ALL STRUCTURAL STEEL | 2 |
| 01/05/2016 | REPAIR BACKWALLS AT ABUTMENTS | 2 |
| 01/05/2016 | CLEAN AND PAINT ALL BEARINGS | |
| 01/05/2016 | REPAIR BEARING 'A' - 'E' ABUT #2 | 1 |
| 01/05/2016 | REPAIR OVERHANGS ALL SPANS | 2 |
| 01/05/2016 | REPAIR JOINT @ "B" END | |
| 01/05/2016 | CLEAN EXPANSION JOINT @ "A" END | |
| 01/05/2016 | CLEAN DEBRIS FROM ABUT. # 1 CAP | |
| 01/05/2016 | REPAIR BEARING 'A' @ ABUTMENT #1 | 1 |
| 01/05/2016 | REPAIR PARAPET ALL SPANS | |
| 01/05/2016 | REPAIR CRACK AT DIAPHRAGM CONNECTION BEAM 'E' @ ABUTMENT # 2 | 2 |
| 01/05/2016 | REPAIR LEFT WING ABUTMENT # 1 | 2 |

Approach 'A'

Date 12/5/2023

JH

Bridge Location No. 19 I-40 18.34 LT
County Route Log Mile



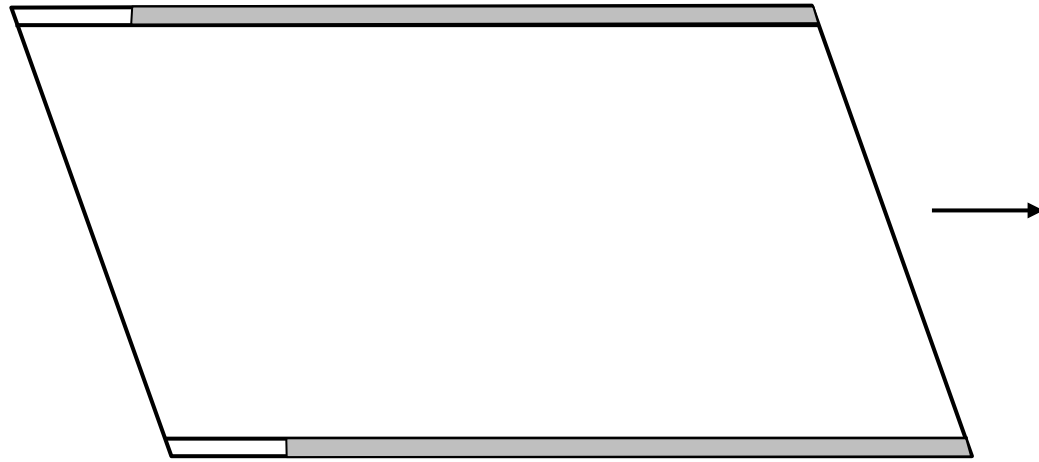
| | | |
|----------|------|--------------------------|
| G-RAIL | GOOD | LT ONLY |
| | | |
| PAVEMENT | GOOD | (1) AC PATCH UP TO 1.5"D |
| | | |
| EMBANKS | GOOD | |
| | | |
| PARAPETS | GOOD | |
| | | |

Approach 'B'

Date 12/5/2023

JH

Bridge Location No. 19 I-40 18.34 LT
County Route Log Mile



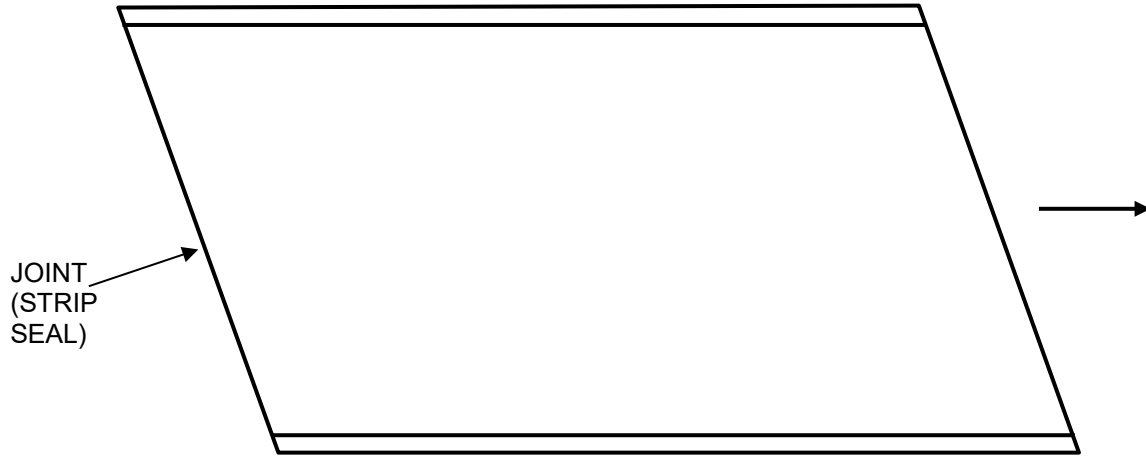
(1)

| | | |
|----------|------|--------------------|
| G-RAILS | GOOD | (1) LGT IMPACT DMG |
| | | |
| PAVEMENT | GOOD | |
| | | |
| EMBANKS | GOOD | |
| | | |
| PARAPETS | GOOD | |
| | | |

Top of Deck Span No. 1

Date 12/5/2023
JH

Bridge Location No. 19 I40 18.34 LT
County Route Log Mile

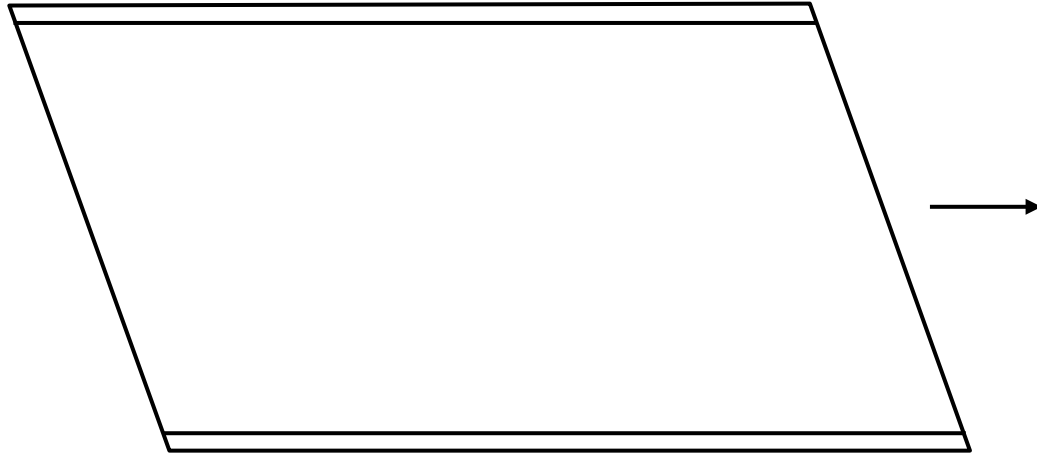


| | | |
|----------|------|--|
| DECK | NV | ASPHALT - GOOD |
| | | |
| PARAPETS | POOR | HVY SCALE ON TOE W/EXP. STL. UPTO 2' H X 4" DP; RDM. VERT. |
| | | & MAP CRACKS 1/16" OPEN FULL LENGTH BOTH SIDES |
| | | |
| JOINTS | POOR | HVY DEBRIS BLD-UP ON SHOULDERS |
| | | |

Top of Deck Span No. 2

Date 12/5/2023
JH

Bridge Location No. 19 I40 18.34 LT
County Route Log Mile

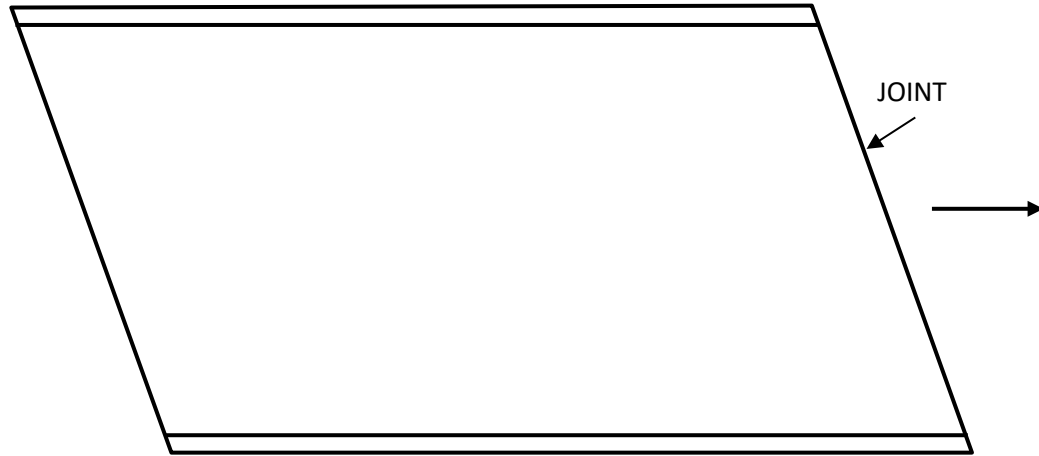


| | | |
|----------|------|--|
| DECK | NV | AC OVERLAY - GOOD |
| | | |
| PARAPETS | POOR | HVY SCALE ON TOE W/EXP. STL. UPTO 1' H X 4" DP; RANDOM VERT. |
| | | & MAP CRACKS 1/16" OPEN FULL LENGTH |
| | | |

Top of Deck Span No. 3

Date 12/5/2023
JH

Bridge Location No. 19 I40 18.34 LT
County Route Log Mile

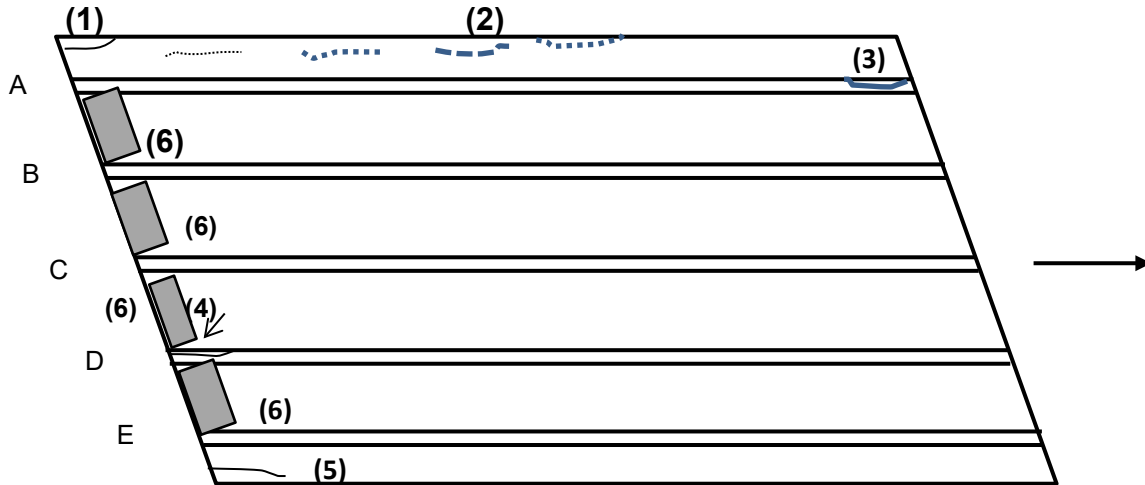


| | | |
|----------|------|---|
| DECK | NV | AC OVERLAY - GOOD |
| | | |
| PARAPETS | POOR | HVY SCALE ON TOE W/EXP. STL. UP TO 1' H X 4" DP., RDM VERT. |
| | | & MAP CRACKS 1/16" OPEN |
| | | |
| JOINT | NV | PAVED OVER W/ IMPENDING POTHOLES, |
| | | POTHOLES UP TO 3'L X 6"W X 1"DP |
| | | |

Bottom of Slab Span No. 1

Date 12/5/2023
HA

Bridge Location No. 19 I40 18.34 LL
County Route Log Mile

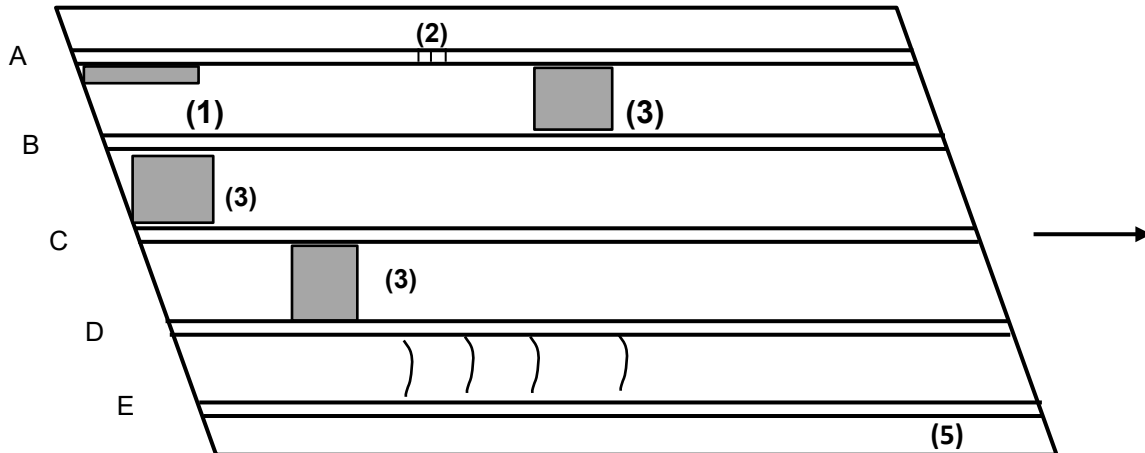


| | | |
|------------|------|---|
| DECK | FAIR | (6) PATCHES FULL WIDTH X 3' L ALL BAYS @ ABUT. # 1 W/ H.L MAP CRACKS & HVY. EFF; FAILING PATCHES W/ EFF AND SPALLING |
| | | |
| DIAPHRAGMS | FAIR | LGT.-MOD CORROSION & PAINT FAILURE - TYP. |
| | | |
| GIRDERS | FAIR | RANDOM LIGHT CORROSION |
| 'A' | FAIR | (3) CORROSION W/ LIGHT L.O.S < 1/16" TOP FLANGE FULL LENGTH |
| 'D' | FAIR | (4) CORRO. & L.O.S TOP FLANGE 8' L |
| 'E' | FAIR | MOD CORR TOP & BOTT FLANGE 10'L X FROM ABUT W/EFF |
| | | |
| OVERHANGS | POOR | (1) HVY. SCALE UPTO 4' L X 1' H X 8" DP W/ EXP. STL.; (2) SCALE 10' X 6" DP; (5) SCALE 5'L X 6"DP |
| | | |
| PAINT | FAIR | FLAKING ON WEB OF BEAMS, FADING, CHALKING |
| | | |

Bottom of Slab Span No. 2

Date 12/5/2023
HA

Bridge Location No. 19 I40 18.34 LL
County Route Log Mile

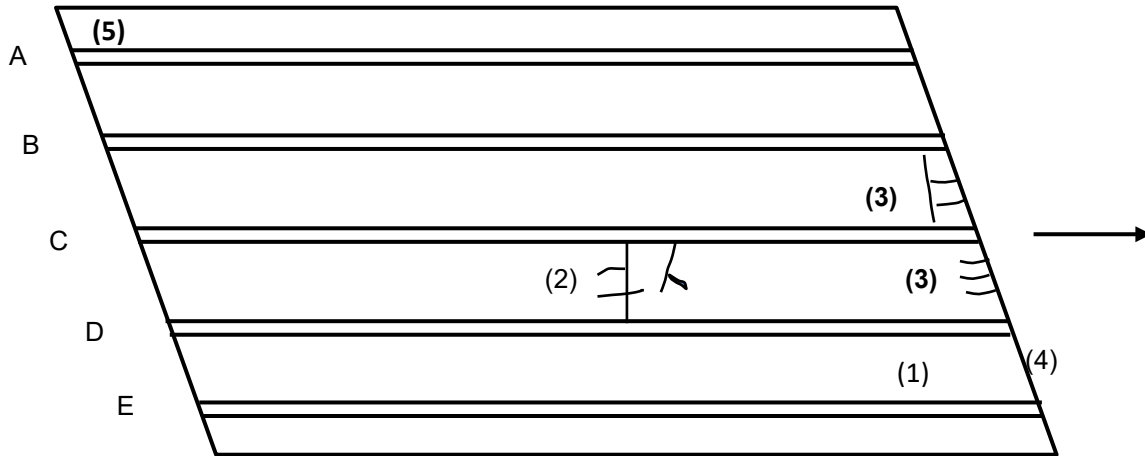


| | | |
|------------|------|--|
| DECK | FAIR | AREAS OF FULL DEPTH DECK REPAIR; |
| | | (3) H.L. CRACKS W/ EFF UPTO 6'L FULL WIDTH |
| | | RDM SPALLS UPTO 6" DIA. ALONG TOP FLANGE |
| | | (1) PATTERN HAIRLINE CRACKS W/EFF.; |
| | | |
| DIAPHRAGMS | FAIR | LIGHT RUST & PITTING (RANDOM), & PAINT FAILURE |
| | | |
| GIRDERS | GOOD | EFF. ON ALL BEAMS (TYP) |
| 'A' | FAIR | (2) LIGHT SCRAPES ON BOTTOM FLANGE < 1/16" DP. & MOD EFF |
| | | ALONG TOP FLANGE W/ L-M CORR, LGT SEC LOSS AT PIER 2 |
| 'D' | FAIR | RANDOM LIGHT RUST & PITTING & PAINT FAILURE |
| 'E' | FAIR | HVY RUST PITTING ON WEB & PAINT FAILURE; |
| | | (5) LGH CORR. 6' L FROM BENT AND SECT LOSS |
| | | |
| OVERHANGS | FAIR | MAP CRACKS W/ HVY. EFF UPTO 1/16" OPEN |
| | | |
| PAINT | FAIR | HVY LOSS ON BM E & DIAPH'S IN BAY D, FADING |
| | | |

Bottom of Slab Span No. 3

Date 12/5/2023
HA

Bridge Location No. 19 I40 18.34 LL
County Route Log Mile

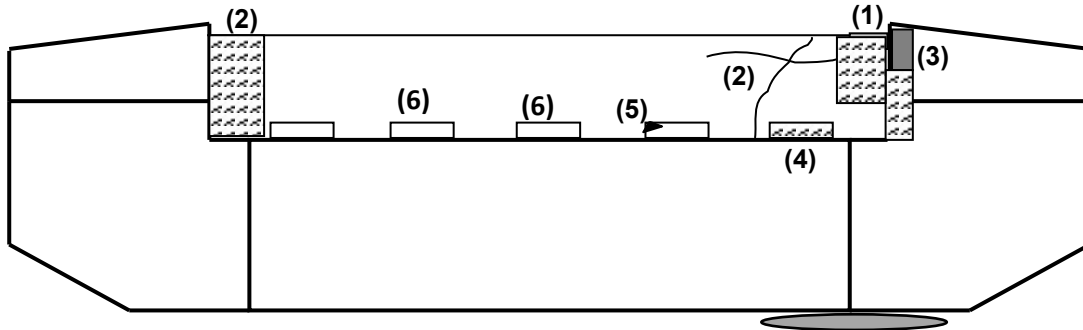


| | | |
|------------|------|---|
| DECK | GOOD | (1) SPALL W/ EXP. STL 1.5' DIA. X 2" DP, |
| | | (2) H.L. MAP CRACKS W/EFF FULL DEPTH REPAIRS W/ H.C'S & EFF |
| | | IN AND AROUND REPAIRED AREAS |
| | | (3) LONGIT H.L. CRACKS W/RUST STAINS |
| DIAPHRAGMS | GOOD | LIGHT RUST & PITTING @ ABUT |
| GIRDERS | GOOD | AREAS OF LIGHT CORROSION @ ABUT. # 2 UPTO 5' L |
| 'B,C,D' | GOOD | VERTICAL MOVEMENT UNDER LOADS UP TO 1/2" |
| 'E' | POOR | (4) VERTICAL CRACK IN WELD @ VERT STIFFNER OVER BEARING |
| | | 1/4" OPEN X 8" L & MOD CORR ON TOP FLANGE 6' L FROM ABUT |
| 'A' | GOOD | (5) LGH CORR. 10' L FROM BENT #2 |
| OVERHANGS | GOOD | SPALLING RIGHT SIDE 3'L |
| | | |

Abutment No. 1

Date 12/5/2023
RK

Bridge Location No. 19 I40 18.34 LL
County Route Log Mile

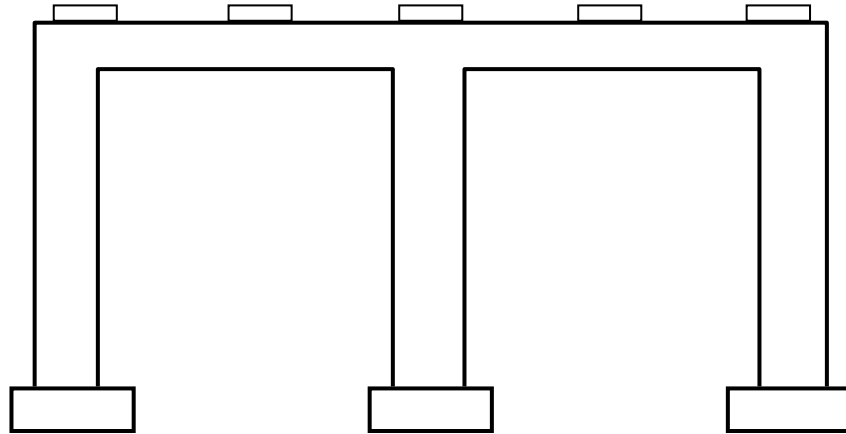


| | | |
|----------|------|---|
| BACKWALL | POOR | (1) SPALL W/ EXP. STL 3' X 3' X 6" DP; RDM H.C.'S W/EFF.; |
| | | (2) MAP CRACKS W/EF. & SPALLS UPTO FULL HEIGHT X 4"DP. |
| | | HVY SCALE W/ EXP STL VOID OR HOLE SHOWING COMPLETELY |
| | | THROUGH TO TOP DECK |
| | | |
| CAP | GOOD | MOD. DEBRIS BUILD-UP; H.L. CRACK W/EFF.; TEXTURE COAT |
| | | PEELING |
| | | |
| WINGS | POOR | (3) HVY. SCALE FULL HEIGHT X 2' L X 10" DP W/ MAP CRACKS W/ |
| | | EFF.; HVY DELAM W/EXP STL (LT WING) |
| | | |
| FOOTINGS | NV | |
| | | |
| BEARINGS | POOR | HVY CORR AND HVY DEBRIS BLD UP. |
| "E" | POOR | MISSIN STABILIZING ARM |
| | | |
| RISERS | FAIR | (4) MAP CRACKING UP TO 1/4" OPEN ON RISER 'A'; |
| | | (6) CRACKS UP TO 1/8" OPEN; (5) SPALL 3" X 2"; |
| | | |
| EMBKMENT | FAIR | CRACKS, SETTLEMENT W/VOID (LEFT SIDE) 3.5' X 2' X 8" DP |
| | | |

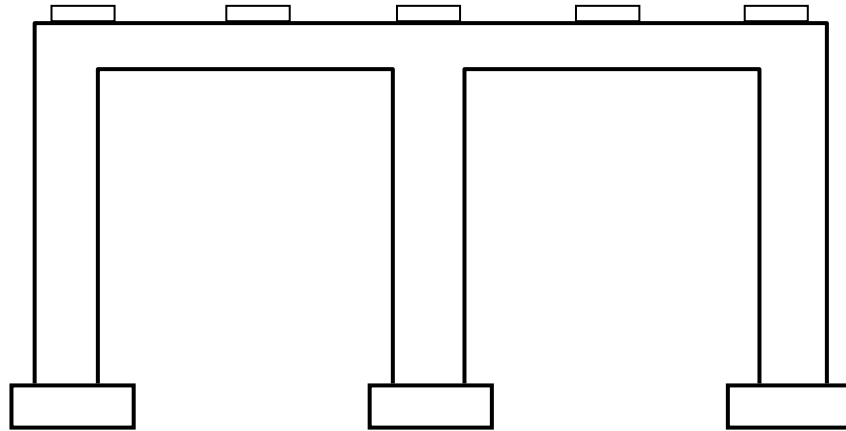
BENT # 1

Date 12/5/2023
RK

Bridge Location No. 19 I40 18.34 LL
County Route Log Mile



FRONT



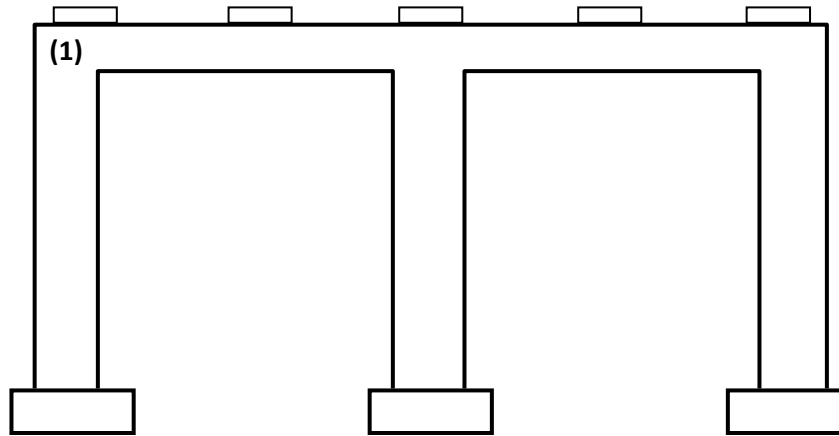
BACK

| | | |
|----------|------|----------------------|
| CAP | GOOD | TEXTURE COAT PEELING |
| | | |
| COLUMNS | GOOD | |
| | | |
| BEARINGS | GOOD | LIGHT-MOD. CORR. |
| | | |
| RISERS | GOOD | |
| | | |
| FOOTINGS | NV | |
| | | |

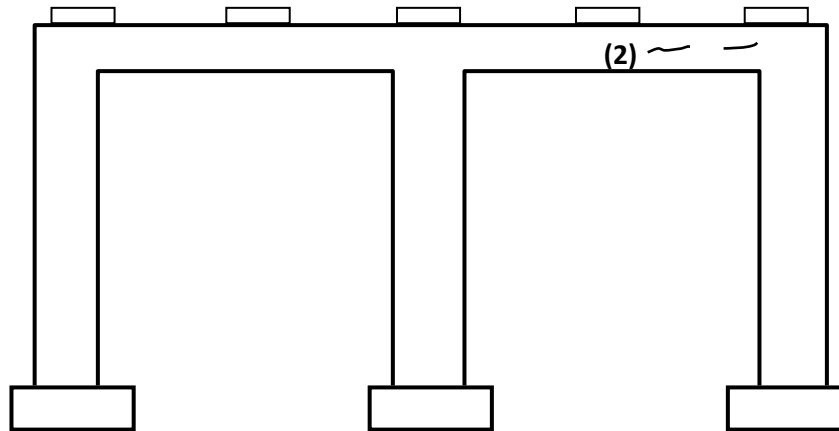
BENT # 2

Date 12/5/2023
RK

Bridge Location No. 19 I40 18.34 LL
County Route Log Mile



FRONT



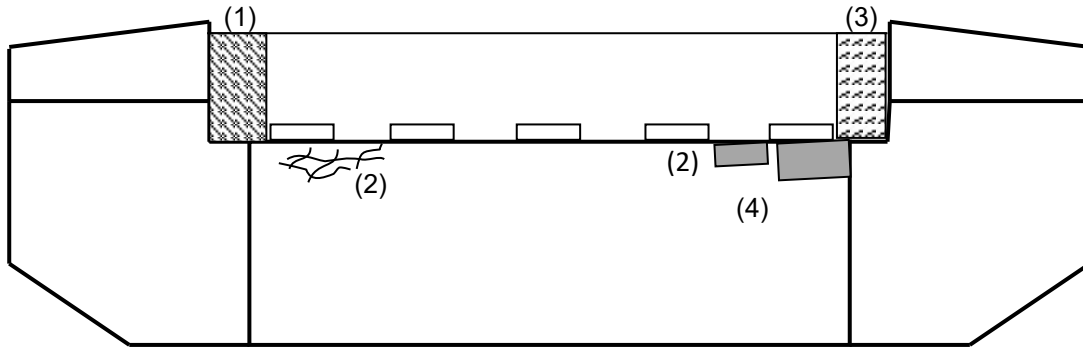
BACK

| | | |
|----------|------|---|
| CAP | GOOD | (1) H.L. VERT. CRACK; (2) H.L. HORIZ. CRACK |
| | | |
| COLUMNS | GOOD | |
| | | |
| BEARINGS | GOOD | |
| | | |
| RISERS | GOOD | |
| 'A' | GOOD | VERT. H.C. |
| | | |
| FOOTINGS | NV | |
| | | |

Abutment No. 2

Date 12/5/2023
RK

Bridge Location No. 19 I40 18.34 LL
County Route Log Mile

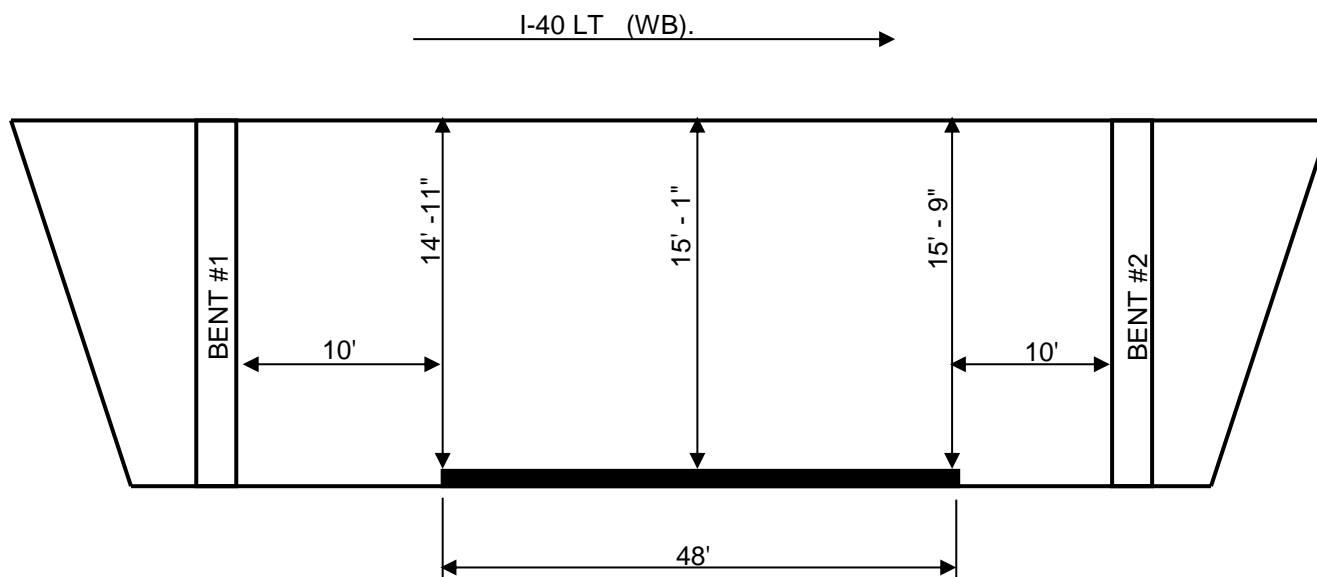


| | | |
|-----------|----------|---|
| BACKWALL | POOR | (1) SPALL W/ EXP STL FULL HEIGHT X 3' X 4"DP; (3) MAP CRACKS |
| | | RANDOM VERT. CRACKS W/ EFF. |
| | | |
| CAP | FAIR | (2) MAP CRACKING UP TO 1/16" OPEN OVER 3' X 2' AREA; |
| | | (4) SCALE W/EXP STL. UP TO 2" DP. 2' H X 2' L, RDM. H.C.'S W/EFF. |
| | | |
| WINGS | FAIR | MAP H.C.'S W/EFF. |
| | | |
| FOOTINGS | NV | |
| | | |
| BEARINGS | POOR | |
| 'B' & 'D' | POOR | ROCKED BACK 10 DEGREES HVY CORR. |
| 'B' | POOR | MISSING NUT & LOOSE NUTS |
| 'C' | CRITICAL | MISSING ANCHOR BOLT, LOOSE NUT, LOOSE/BROKEN PIN, |
| | | BRG. SEPERATES FROM PLATE UP TO 1/4" FROM TRAFFIC FLOW |
| 'D' & 'E' | POOR | LOOSE NUTS |
| | | |
| RISERS | GOOD | |
| 'A' | GOOD | MAP CRACKS & SCALE |
| | | |

Horizontal and Vertical Clearances

Date 12/5/2023

Bridge Location No. 19 I40 18.34 LL
County Route Log Mile



19-SR006- 8.04
8TH AVE. SR 06